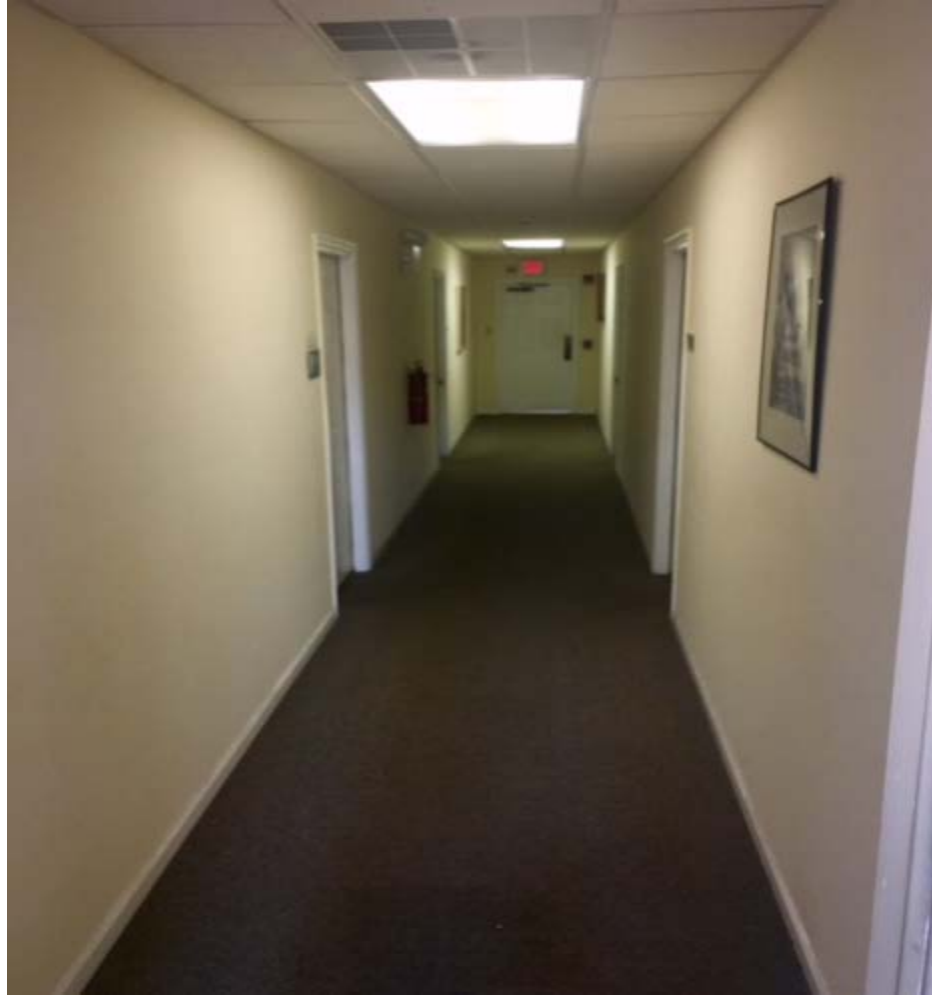


FOR SALE**\$499,000.00****2211 Chichester Avenue
Boothwyn, PA 19061****Great Owner User/Investor Opportunity****2 Story Office Building - +/- 7,000 Square Feet****Tremendous highway access – only 1/4 mile from I95 & Chichester Avenue Major Intersection****Great Visibility - High Traffic - Public Transportation****18,000 Vehicles per day****Onsite parking Lot for 30 cars****This building can be used by one owner user or up to 10 private office suites (700 Sq. Ft. suites, separate electric meters)****Zoned: C1****Acres: 0.50****2018 Real Estate Taxes: \$20,146****Call for tour – Please Do not disturb occupants****Jeffrey B Dowd****Cell: 610-842-4383****Office: 610-359-1100****Fax: 610-359-1125****Email: jdowd@zmcre.com**

Photos



Photos

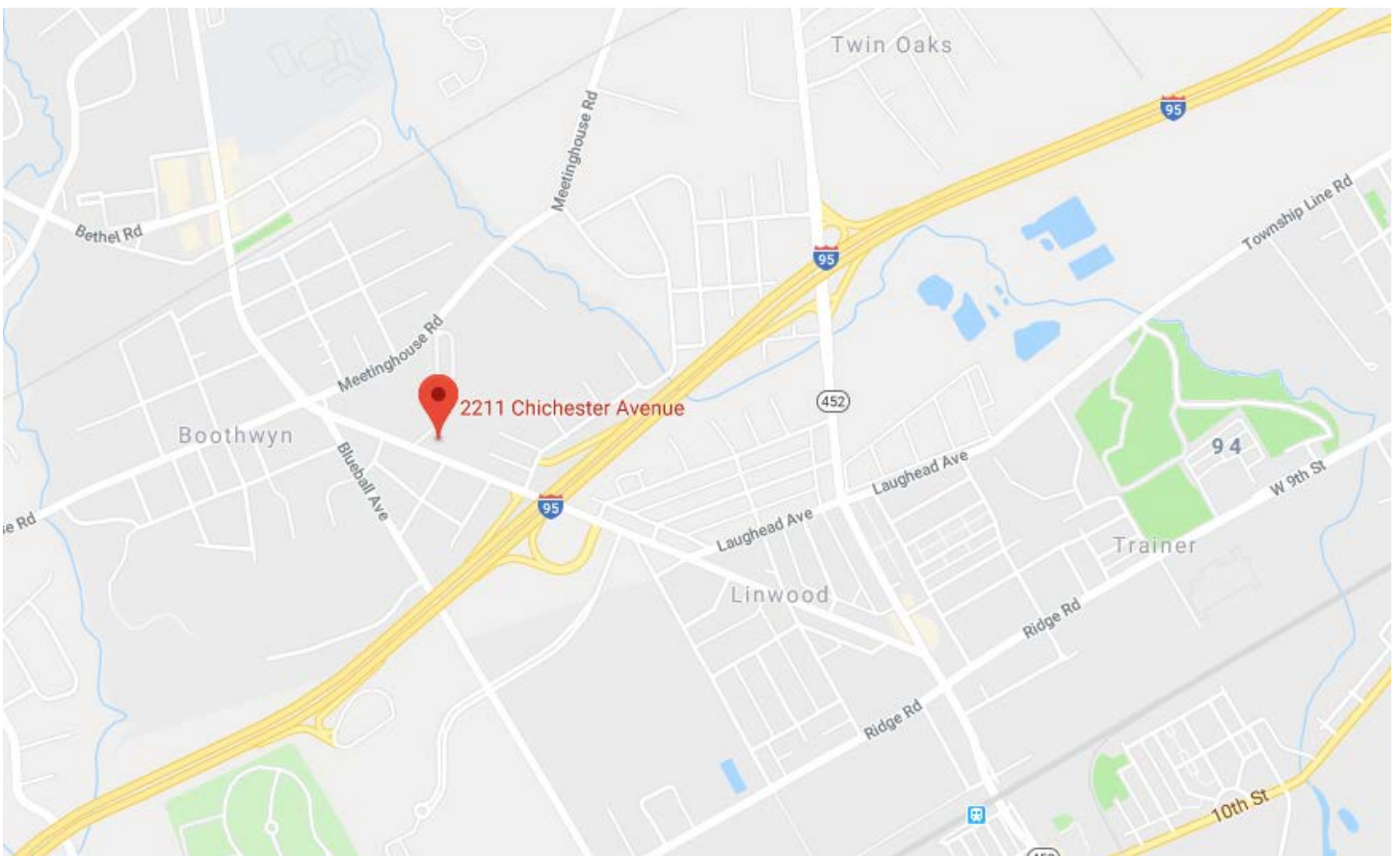


*This information above has been obtained from sources believed reliable. While we do not doubt its accuracy, we have not verified it and make no guarantee, warranty or representation about it. It is Buyer/Lessee responsibility to independently confirm its accuracy and completeness. This is not intended to solicit another Broker's listing.

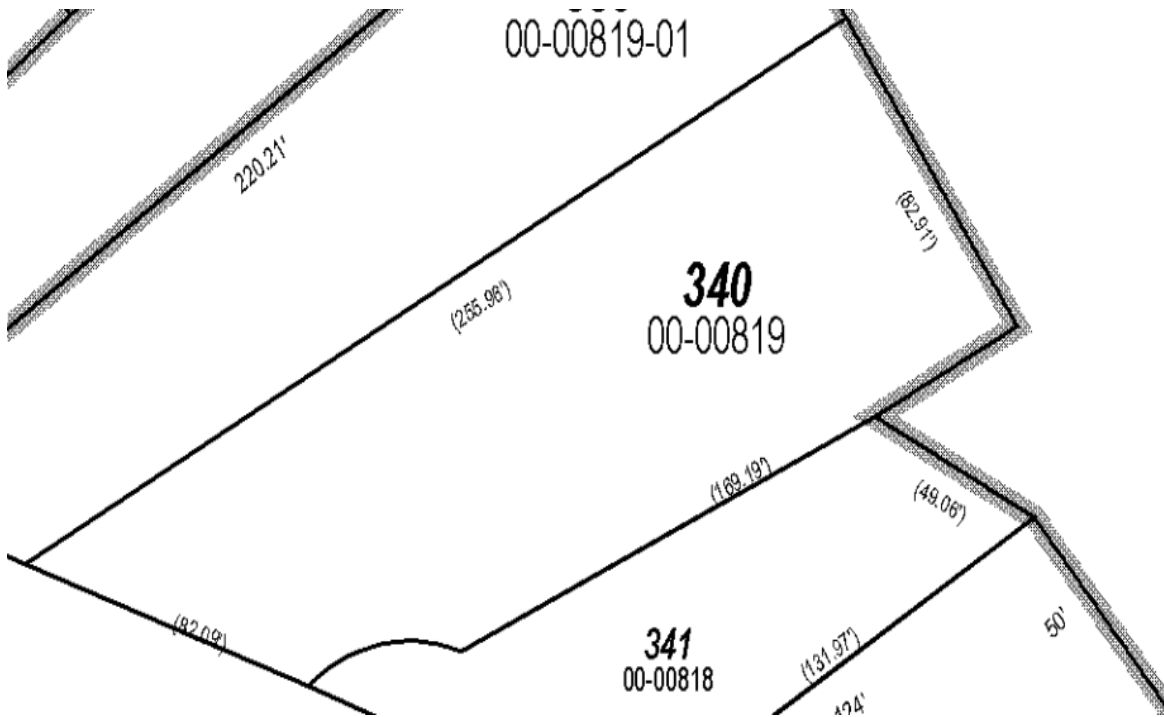
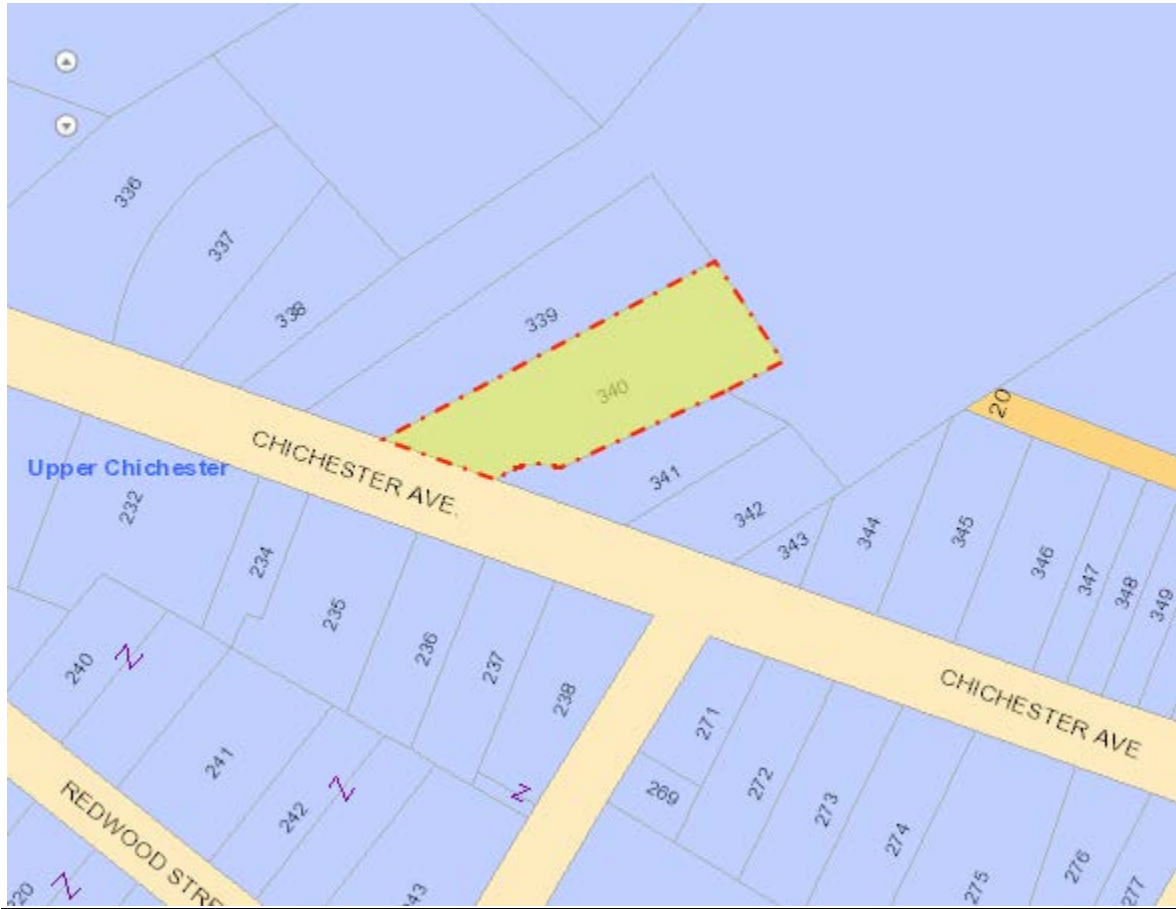
BIRD'S EYE



MAP VIEW



Tax Map



*This information above has been obtained from sources believed reliable. While we do not doubt its accuracy, we have not verified it and make no guarantee, warranty or representation about it. It is Buyer/Lessee responsibility to independently confirm its accuracy and completeness. This is not intended to solicit another Broker's listing.

